

# Ahoy There!

Year 1

This topic will develop the children's **Geography** skills by encouraging them to think about holiday destinations and in particular, the features of UK Seaside resorts including, the beach, cliffs and tourist attractions. We will look at photos of seaside resorts from the perspective of a seagull to identify and compare human and physical geographical features of seaside resorts. We will also use construction materials to create our own 3D coastline model.

In **Music** we will build on our understanding of 'Tempo' and 'Pitch'. We will make links between music, sounds and environments and use percussion, vocal and body sounds to represent calm or stormy seas. We will use a variety of tuned and untuned instruments, including ocarinas. We will learn how to create our own graphic score to represent a story that we will then perform.

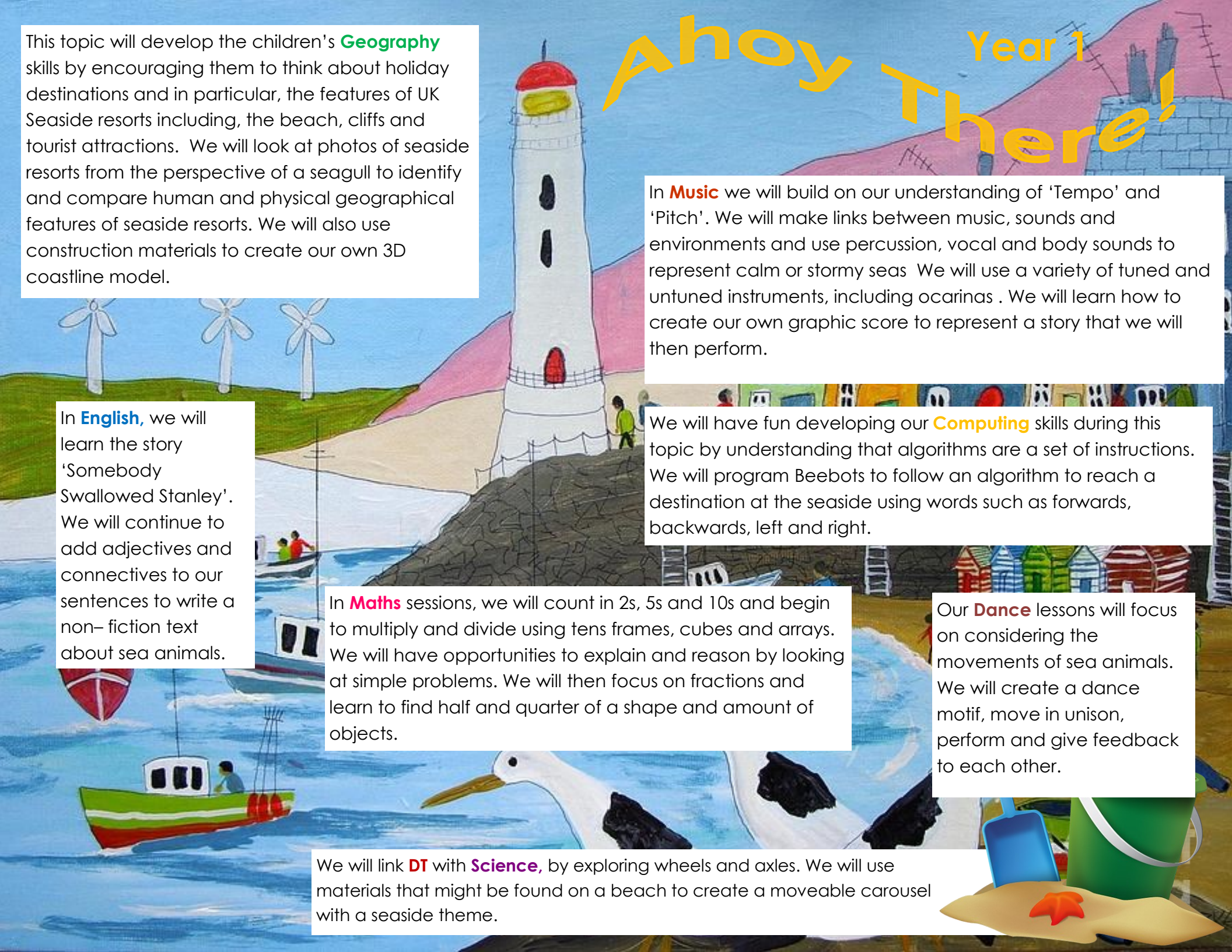
In **English**, we will learn the story 'Somebody Swallowed Stanley'. We will continue to add adjectives and connectives to our sentences to write a non-fiction text about sea animals.

We will have fun developing our **Computing** skills during this topic by understanding that algorithms are a set of instructions. We will program Beebots to follow an algorithm to reach a destination at the seaside using words such as forwards, backwards, left and right.

In **Maths** sessions, we will count in 2s, 5s and 10s and begin to multiply and divide using tens frames, cubes and arrays. We will have opportunities to explain and reason by looking at simple problems. We will then focus on fractions and learn to find half and quarter of a shape and amount of objects.

Our **Dance** lessons will focus on considering the movements of sea animals. We will create a dance motif, move in unison, perform and give feedback to each other.

We will link **DT** with **Science**, by exploring wheels and axles. We will use materials that might be found on a beach to create a moveable carousel with a seaside theme.



# Topic Tasters

## Useful Websites

[What is the UK? - BBC Bitesize](#)

[The Green - Live Webcam in Hunstanton, Norfolk](#)

[South Prom - Live Webcam in Hunstanton, Norfolk](#)



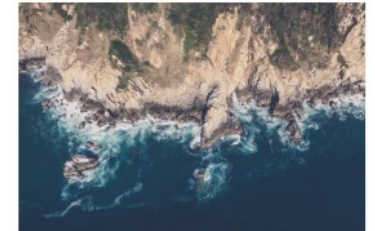
## Geographical Features of the Seaside



**cliffs**



**lighthouse**



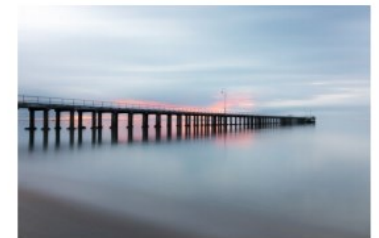
**coastline**



**harbour**



**sand dunes**



**pier**